

Mission - Rawhide Lighting



Antigua Furniture Guild, Ltd.

ANTIGUA RAWHIDE LIGHTING

2011 CATALOG

ANTIGUA RAWHIDE LIGHTING



Hand - Stitched



Style

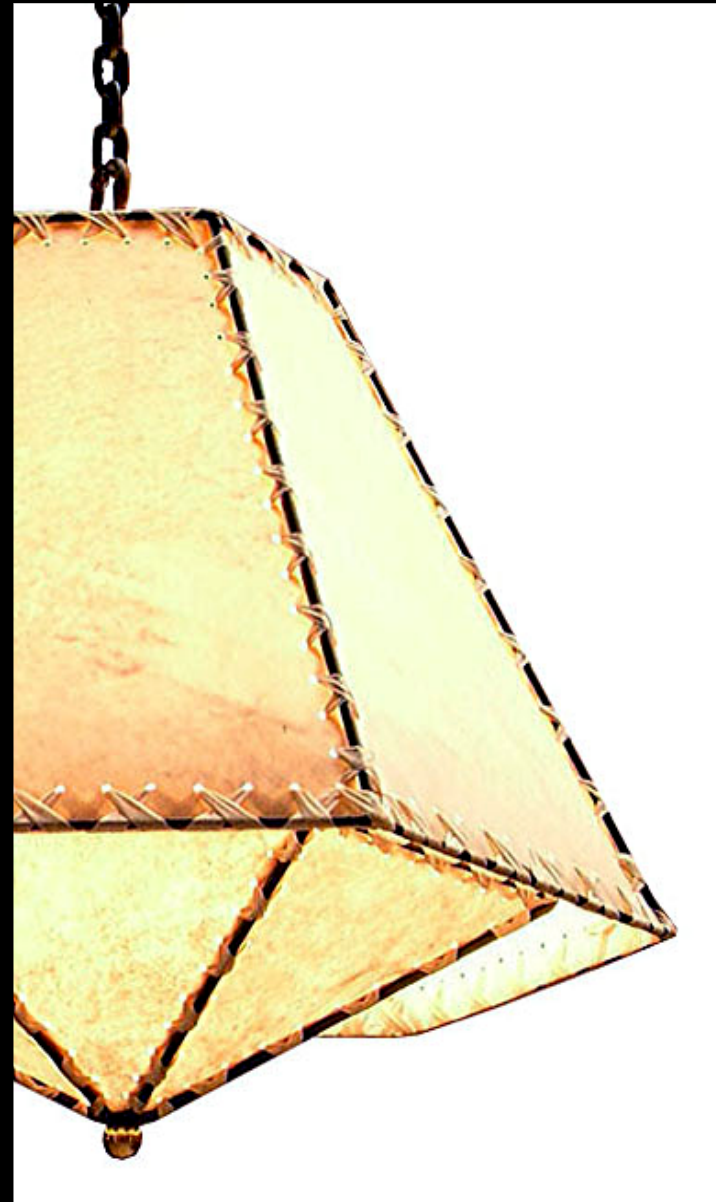


Antigua Furniture Guild, Ltd.
4952 Windsor Hill Suite 203
San Antonio, Texas 78239
Tel. 1-800-813-1408 Fax 1-866-275-7343
www.AntiguaDecor.com Sales@AntiguaDecor.com

Mission - Rawhide Lighting



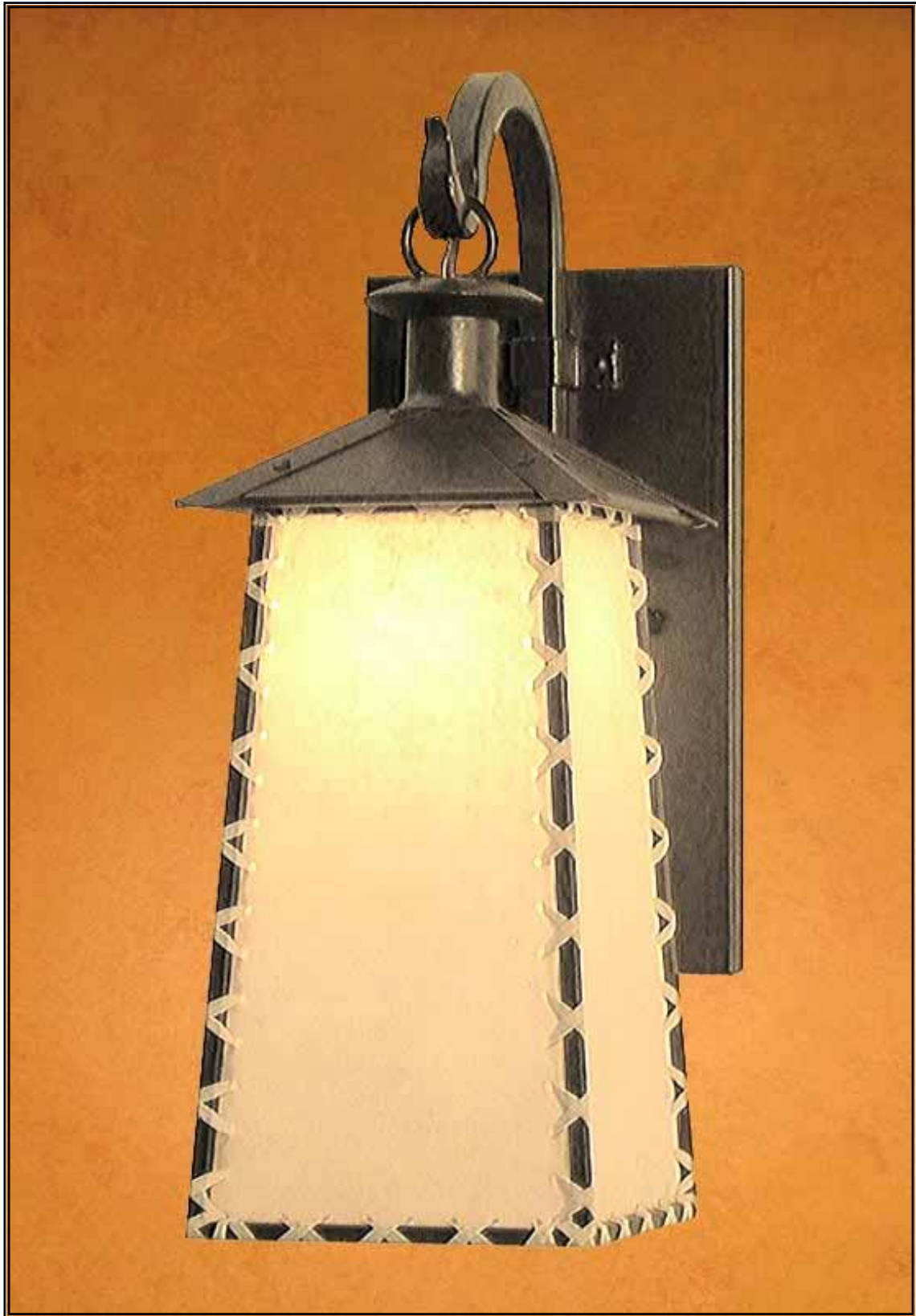
Flare



Detail

Antigua's Rawhide Lighting collection is a unique blend of Mission style with Wrought-iron and Rawhide that was inspired by the Arts & Crafts movement of early Americana. Hand-stitched using traditional, old world craftsmanship from carefully selected, sun-dried hides, cut and laced to a mission style wrought-iron frame. A fusion of contemporary and rustic style, each fixture is a work of art. The Mission-Rawhide Pendant collection is comprised of 4 distinctive Mission designs and available in 4 sizes as Wall Sconces or Pendant Lights. The warm glow of amber rawhide cross-stitched to a Mission style iron frame adds warmth to any room throughout the house.

ANTIGUA RAWHIDE LIGHTING



Mission - Rawhide Sconces

MISSION-RAWHIDE SCONCES

Antigua's Mission-Rawhide Sconce collection is a unique blend of Mission style with Wrought-iron and Rawhide that was inspired by the Arts & Crafts movement of early Americana. Hand-made using traditional, old world craftsmanship from carefully selected, sun-dried hides, cut and laced to a mission style wrought-iron frame. A fusion of contemporary and rustic style, each Sconce is a work of art. The Mission-Rawhide Sconce collection is comprised of 4 distinctive Mission designs and available in 4 sizes and 4 finishes. The warm glow of amber rawhide cross-stitched to a Mission style iron frame adds warmth to any room throughout the house.



ANTIGUA RAWHIDE LIGHTING



San Juan Sconce MnSc201

Inspired by the Arts & Crafts movement of early Americana, our **San Juan Sconce** is custom made by Antigua's blacksmiths and rawhide craftsmen. Hand-made using traditional, old world craftsmanship from carefully selected, sun-dried hides, cut and cross-stitched to a hand-crafted, mission style wrought-iron frame. A fusion of contemporary and rustic style, the San Juan Sconce is a work of art that adds warmth to any room throughout the house. Available in 4 sizes and 4 finishes.



Mission - Rawhide Sconces



San Juan Sconce - SM

MnSc201 - SM Handcrafted in Wrought Iron
Finish - Faux Brown; delivery time varies - call for estimate

Specifications:

Overall Height: 8 1/2"	Weight: 1.12 lbs.
Overall Width: 6"	Lamp: 40w Max
Projection: 9"	Max J-Box: 4" dia
Back-Plate: 6 x 6"	UL listed lamp parts



San Juan Sconce - MED

MnSc201 - MED Handcrafted in Wrought Iron
Finish - Faux Brown; delivery time varies - call for estimate

Specifications:

Overall Height: 11"	Weight: 2.35 lbs.
Overall Width: 7.5"	Lamp: 60w Max
Projection: 10.25"	Max J-Box: 4" dia
Back-Plate: 7.5 x 7.5"	UL listed lamp parts



San Juan Sconce - LG

MnSc201 - LG Handcrafted in Wrought Iron
Finish - Faux Brown; delivery time varies - call for estimate

Specifications:

Overall Height: 13 1/2"	Weight: 3.38 lbs.
Overall Width: 9"	Lamp: 75w Max
Projection: 12.25"	Max J-Box: 4" dia
Back-Plate: 9 X 9"	UL listed lamp parts



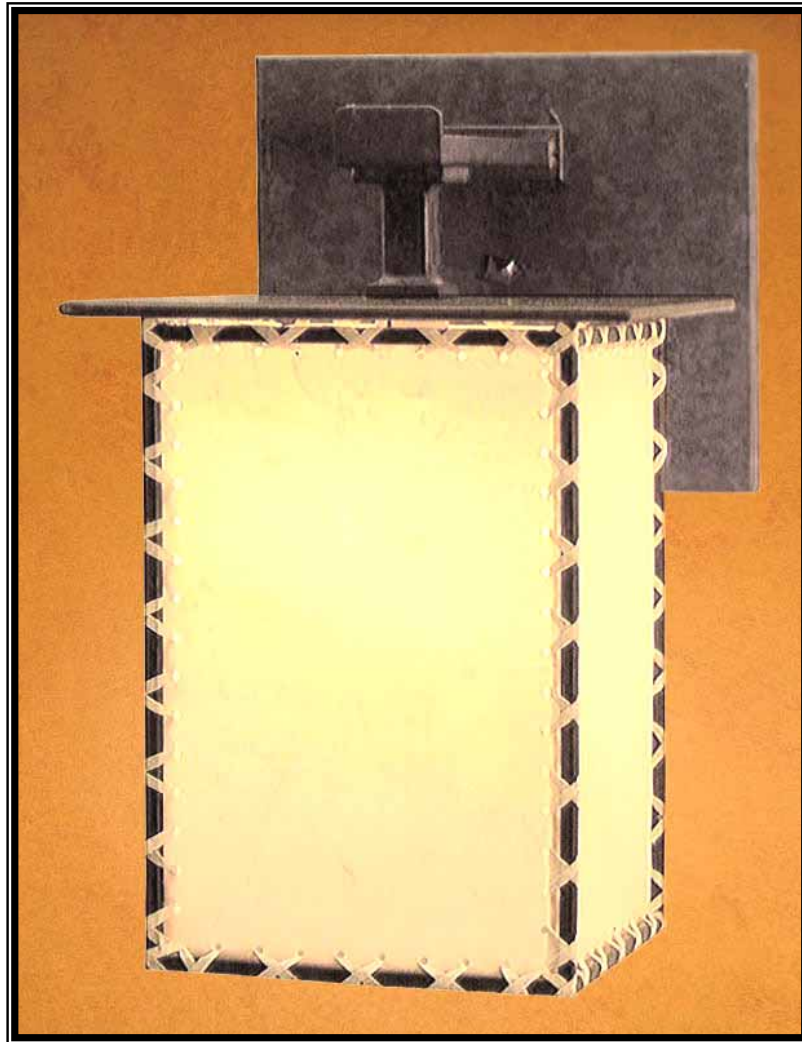
San Juan Sconce - XLG

MnSc201 - XLG Handcrafted in Wrought Iron
Finish - Faux Brown; delivery time varies - call for estimate

Specifications:

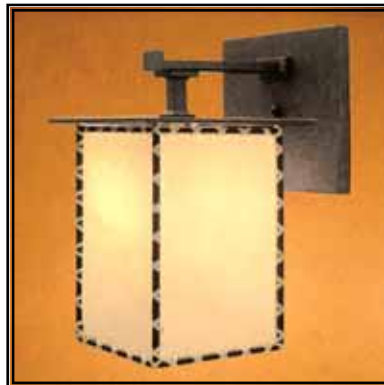
Overall Height: 16"	Weight: 6.60 lbs.
Overall Width: 10.5"	Lamp: 100w Max
Projection: 13"	Max J-Box: 4" dia
Back-Plate: 10.5X 10.5"	UL listed lamp parts

ANTIGUA RAWHIDE LIGHTING



San Miguel Sconce MnSc202

Inspired by the Arts & Crafts movement of early Americana, our **San Miguel Sconce** is custom made by Antigua's blacksmiths and rawhide craftsmen. Hand-made using traditional, old world craftsmanship from carefully selected, sun-dried hides, cut and cross-stitched to a hand-crafted, mission style wrought-iron frame. A fusion of contemporary and rustic style, the San Miguel Sconce is a work of art that adds warmth to any room throughout the house. Available in 4 sizes and 4 finishes.



Mission - Rawhide Sconces



San Miguel Sconce -- SM

MnSc202-SM

Handcrafted in Wrought Iron

Finish - Faux Brown; delivery time varies - call for estimate

Specifications:

Overall Height: 11 1/2"

Overall Width: 7"

Projection: 9"

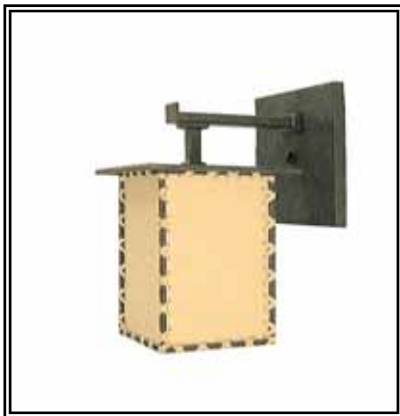
Back-Plate: 7 X 6"

Weight: 17.27 lbs.

Lamp: 40w Max

Max J-Box: 4" dia

UL listed lamp parts



San Miguel Sconce - MED

MnSc202 - MED

Handcrafted in Wrought Iron

Finish - Faux Brown; delivery time varies - call for estimate

Specifications:

Overall Height: 12 1/2"

Overall Width: 8"

Projection: 10.5"

Back-Plate: 8 X 7"

Weight: 2.28 lbs.

Lamp: 60w Max

Max J-Box: 4" dia

UL listed lamp parts



San Miguel Sconce - LG

MnSc202 - LG

Handcrafted in Wrought Iron

Finish - Faux Brown; delivery time varies - call for estimate

Specifications:

Overall Height: 15"

Overall Width: 9"

Projection: 11"

Back-Plate: 9 X 8"

Weight: 3.38 lbs.

Lamp: 75w Max

Max J-Box: 4" dia

UL listed lamp parts



San Miguel Sconce - XLG

MnSc202 - XLG

Handcrafted in Wrought Iron

Finish - Faux Brown; delivery time varies - call for estimate

Specifications:

Overall Height: 20 1/2"

Overall Width: 10"

Projection: 12"

Back-Plate: 10 X 8.5"

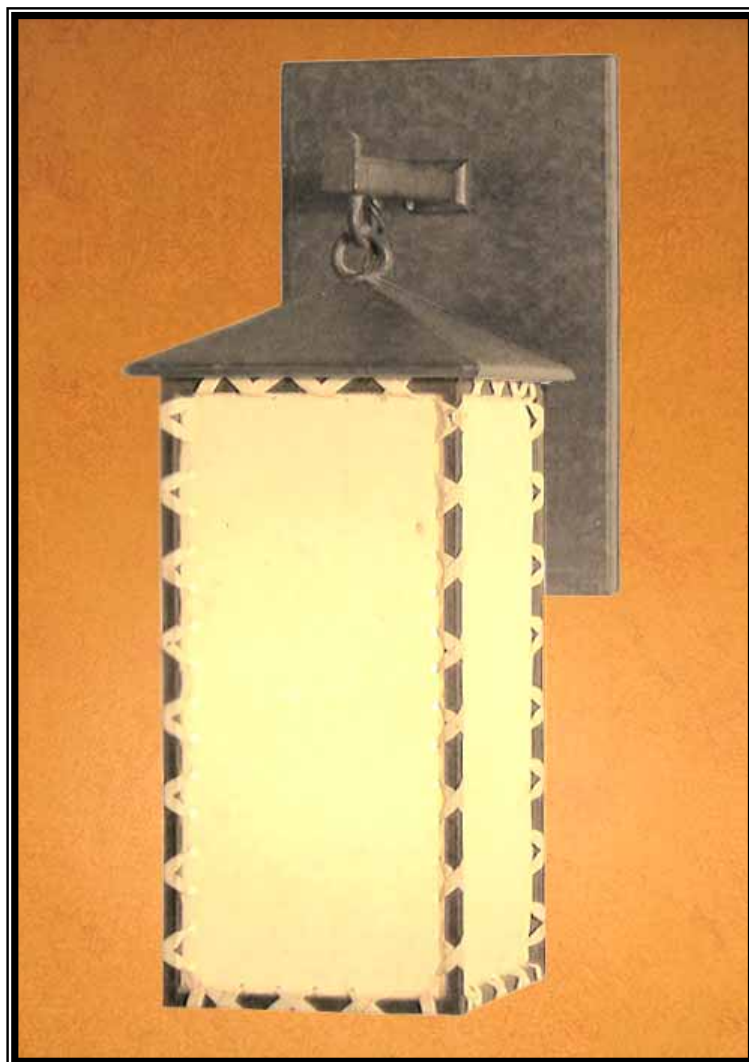
Weight: 6.60 lbs.

Lamp: 100w Max

Max J-Box: 4" dia

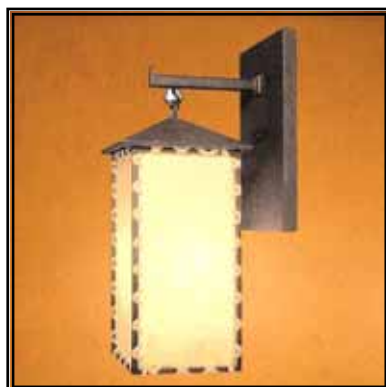
UL listed lamp parts

ANTIGUA RAWHIDE LIGHTING



Santa Cruz Sconce MnSc203

Inspired by the Arts & Crafts movement of early Americana, our **Santa Cruz Sconce** is custom made by Antigua's blacksmiths and rawhide craftsmen. Hand-made using traditional, old world craftsmanship from carefully selected, sun-dried hides, cut and cross-stitched to a hand-crafted, mission style wrought-iron frame. A fusion of contemporary and rustic style, the Santa Cruz Sconce is a work of art that adds warmth to any room throughout the house. Available in 4 sizes and 4 finishes.



Mission - Rawhide Sconces



Santa Cruz Sconce - SM

MnSc203 - SM Handcrafted in Wrought Iron
Finish - Faux Brown; delivery time varies - call for estimate

Specifications:

Overall Height: 13"	Weight: 1.47 lbs.
Overall Width: 6"	Lamp: 40w Max
Projection: 8.5"	Max J-Box: 4" dia
Back-Plate: 6 X 8"	UL listed lamp parts



Santa Cruz Sconce - MED

MnSc203 - MED Handcrafted in Wrought Iron
Finish - Faux Brown; delivery time varies - call for estimate

Specifications:

Overall Height: 16"	Weight: 1.83 lbs.
Overall Width: 6"	Lamp: 40w Max
Projection: 8.5 "	Max J-Box: 4" dia
Back-Plate: 6 x 10"	UL listed lamp parts

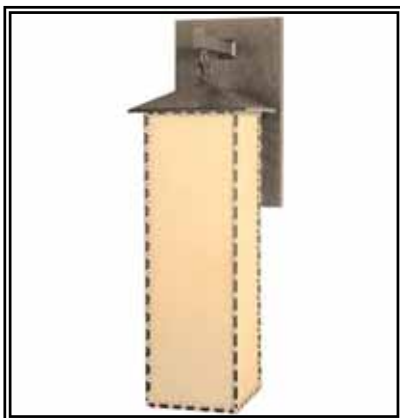


Santa Cruz Sconce - LG

MnSc203 - LG Handcrafted in Wrought Iron
Finish - Faux Brown; delivery time varies - call for estimate

Specifications:

Overall Height: 22 3/4"	Weight: 3.61 lbs.
Overall Width: 7.5"	Lamp: 60w Max
Projection: 10"	Max J-Box: 4" dia
Back-Plate: 7.5 x 12"	UL listed lamp parts



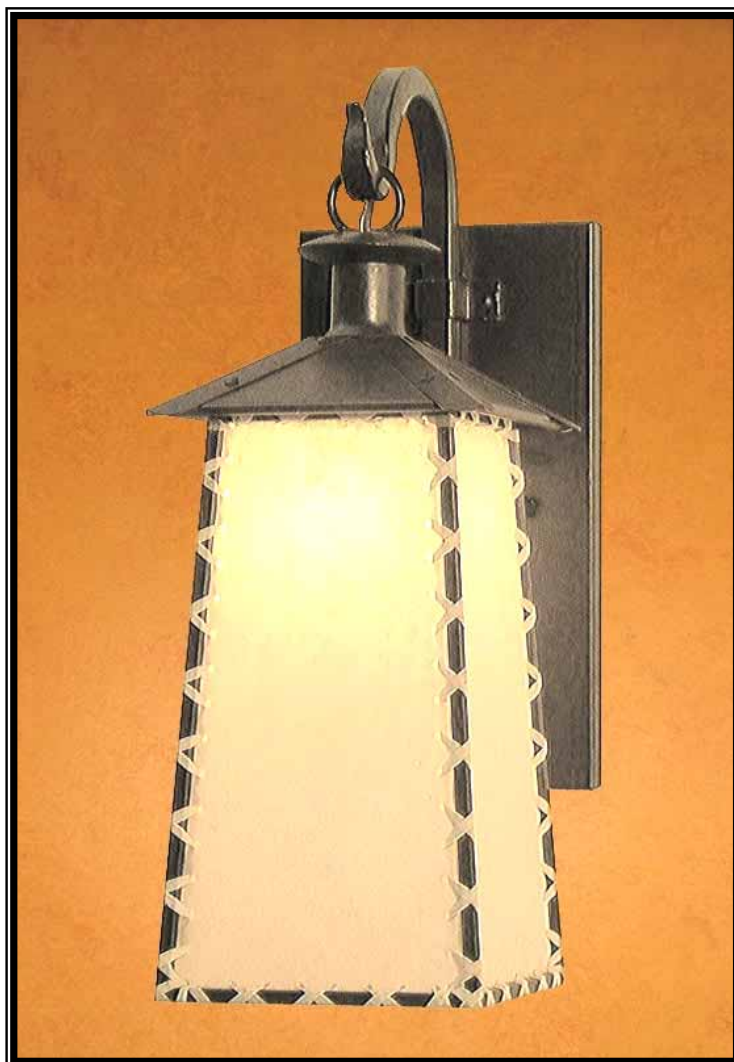
Santa Cruz Sconce-XLG

MnSc203 - XLG Handcrafted in Wrought Iron
Finish - Faux Brown; delivery time varies - call for estimate

Specifications:

Overall Height: 28"	Weight: 4.66 lbs.
Overall Width: 9"	Lamp: 75w Max
Projection: 11"	Max J-Box: 4" dia
Back-Plate: 9 x 14.5"	UL listed lamp parts

ANTIGUA RAWHIDE LIGHTING



Capistrano Sconce MnSc204

Inspired by the Arts & Crafts movement of early Americana, our **Capistrano Sconce** is custom made by Antigua's blacksmiths and rawhide craftsmen. Hand-made using traditional, old world craftsmanship from carefully selected, sun-dried hides, cut and cross-stitched to a hand-crafted, mission style wrought-iron frame. A fusion of contemporary and rustic style, the Capistrano Sconce is a work of art that adds warmth to any room throughout the house. Available in 4 sizes and 4 finishes.



Mission - Rawhide Sconces



Capistrano Sconce – SM

MnSc204 - SM

Handcrafted in Wrought Iron

Finish - Faux Brown; delivery time varies - call for estimate

Specifications:

Overall Height: 14"

Overall Width: 6.5"

Projection: 9"

Back-Plate: 6 x 9.5"

Weight: 2.33 lbs.

Lamp: 40w Max

Max J-Box: 4" dia

UL listed lamp parts



Capistrano Sconce - MED

MnSc204 - MED

Handcrafted in Wrought Iron

Finish - Faux Brown; delivery time varies - call for estimate

Specifications:

Overall Height: 17 1/2"

Overall Width: 6.5"

Projection: 10"

Back-Plate: 6 x 11"

Weight: 2.64 lbs.

Lamp: 60w Max

Max J-Box: 4" dia

UL listed lamp parts



Capistrano Sconce - LG

MnSc204 - LG

Handcrafted in Wrought Iron

Finish - Faux Brown; delivery time varies - call for estimate

Specifications:

Overall Height: 24"

Overall Width: 11"

Projection: 8"

Back-Plate: 7.5 x 14.5"

Weight: 4.82 lbs.

Lamp: 75w Max

Max J-Box: 4" dia

UL listed lamp parts



Capistrano Sconce - XLG

MnSc204 - XLG

Handcrafted in Wrought Iron

Finish - Faux Brown; delivery time varies - call for estimate

Specifications:

Overall Height: 30 1/2"

Overall Width: 10"

Projection: 14"

Back-Plate: 9 x 17.5"

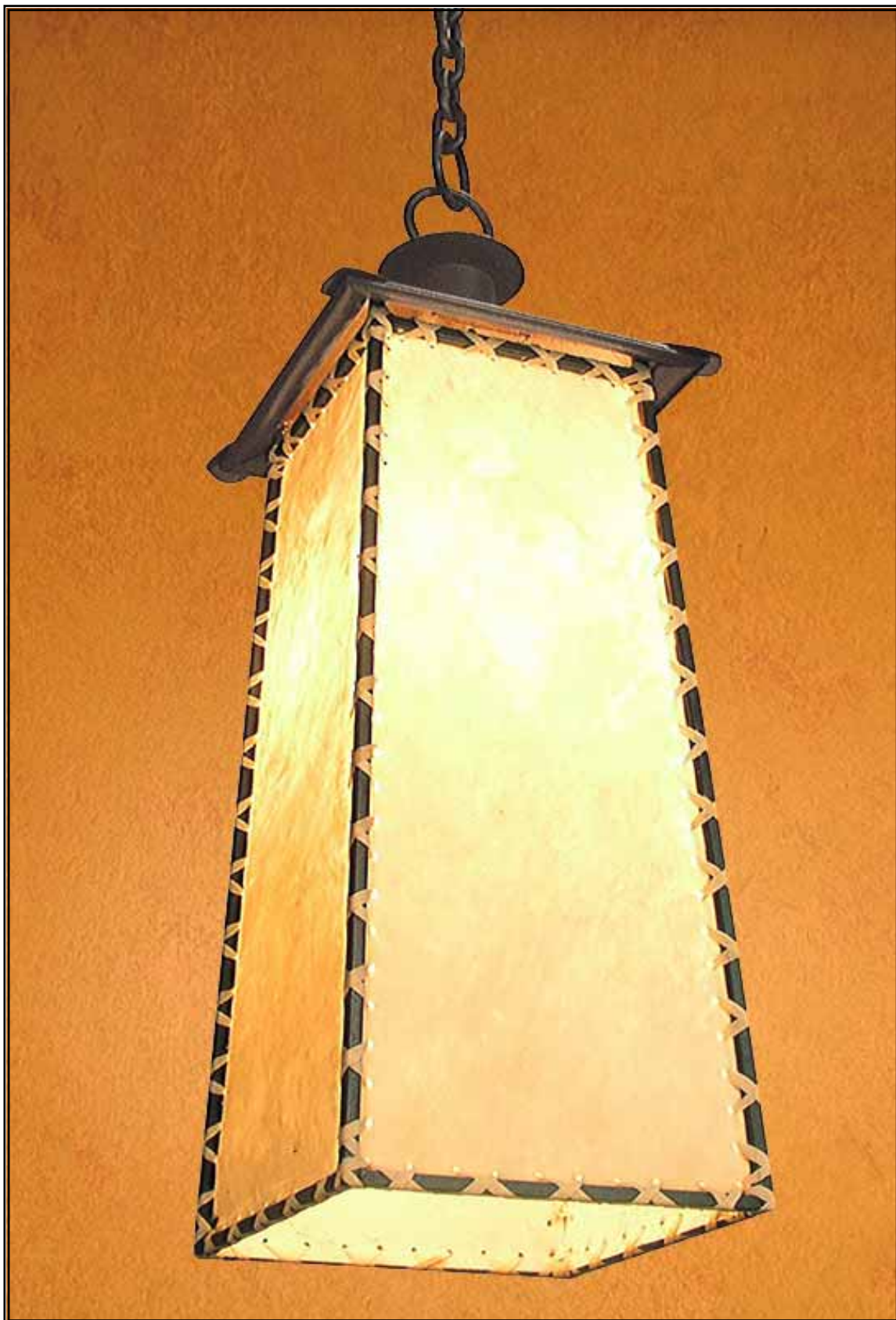
Weight: 10.78 lbs.

Lamp: 100w Max

Max J-Box: 4" dia

UL listed lamp parts

ANTIGUA RAWHIDE LIGHTING



Mission - Rawhide Pendant Lights

MISSION-RAWHIDE PENDANTS

Antigua's Mission-Rawhide Pendant collection is an unique blend of Mission style with Wrought-iron and Rawhide that was inspired by the Arts & Crafts movement of early Americana. Hand-made using traditional, old world craftsmanship from carefully selected, sun-dried hides, cut and laced to a mission style wrought-iron frame. A fusion of contemporary and rustic style, each pendant is a work of art. The Mission-Rawhide Pendant collection is comprised of 4 distinctive Mission designs and available in 4 sizes and 4 finishes. The warm glow of amber rawhide cross-stitched to a Mission style iron frame adds warmth to any room throughout the house.



ANTIGUA RAWHIDE LIGHTING



San Juan Pendant Light MnPd201

Antigua's **San Juan Pendant Light** is a unique blend of Mission style with Wrought-iron and Rawhide that was inspired by the Arts & Crafts movement of early Americana. Hand-made using traditional, old world craftsmanship from carefully selected, sun-dried hides, cut and cross-stitched to a hand-crafted mission style wrought-iron frame. A fusion of contemporary and rustic style, the San Juan Pendant Light is a work of art that adds warmth to any room. Available in 4 sizes and 4 finishes and may be ordered with the length of chain desired.



Mission - Rawhide Pendant Lights



San Juan Pendant Light - Sm

MnPd201-Sm Hand Labored in Wrought Iron
Finish - Faux Brown; delivery time varies - call for estimate

Specifications:

Height w/o chain: 11"	Weight: 4.1 lbs.
Overall Widths: 7.5 x 7.5"	Lamp: 60w Max
Canopy Size: 5"	Max J-Box: 4" dia
Chain length: 48" (3/16")	UL listed lamp parts



San Juan Pendant Light -Med

MnPd201-Med Hand Labored in Wrought Iron
Finish - Faux Brown; delivery time varies - call for estimate

Specifications:

Height w/o chain: 13 1/2"	Weight: 5.8 lbs.
Overall Widths: 9 x 9"	Lamp: 60w Max
Canopy Size: 5"	Max J-Box: 4" dia
Chain length: 48" (1/4")	UL listed lamp parts



San Juan Pendant Light - Lg

MnPd201-Lg Hand Labored in Wrought Iron
Finish - Faux Brown; delivery time varies - call for estimate

Specifications:

Height w/o chain: 15"	Weight: 7.0 lbs.
Overall Widths: 10.75 x 10.75"	Lamp: 75w Max
Canopy Size: 5"	Max J-Box: 4" dia
Chain length: 48" (5/16")	UL listed lamp parts



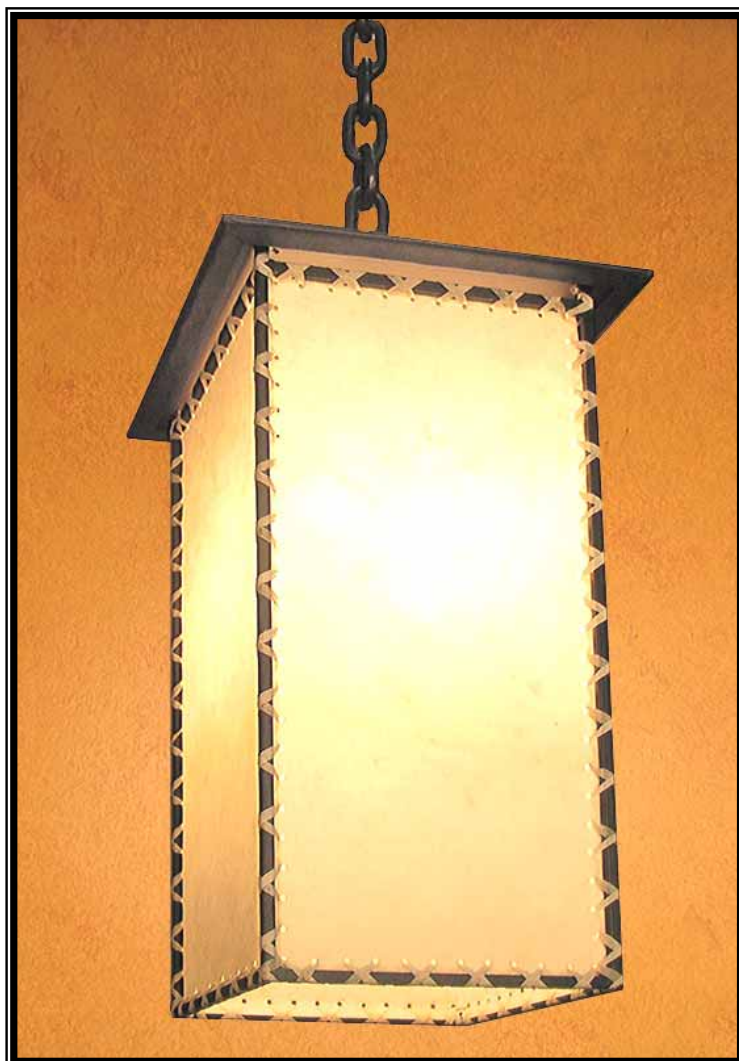
San Juan Pendant Light -XLg

MnPd201-XLg Hand Labored in Wrought Iron
Finish - Faux Brown; delivery time varies - call for estimate

Specifications:

Height w/o chain: 17"	Weight: 8.0 lbs.
Overall Widths: 12 x 12"	Lamp: 100w Max
Canopy Size: 5"	Max J-Box: 4" dia
Chain length: 48" (5/16")	UL listed lamp parts

ANTIGUA RAWHIDE LIGHTING



San Miguel Pendant Light MnPd202

Antigua's **San Miguel Pendant Light** is a unique blend of Mission style with Wrought-iron and Rawhide that was inspired by the Arts & Crafts movement of early Americana. Hand-made using traditional, old world craftsmanship from carefully selected, sun-dried hides, cut and cross-stitched to a hand-crafted mission style wrought-iron frame. A fusion of contemporary and rustic style, the San Miguel Pendant Light is a work of art that adds warmth to any room. Available in 4 sizes and 4 finishes and may be ordered with the length of chain desired.



Mission - Rawhide Pendant Lights



San Miguel Pendant Light - Sm

MnPd202-Sm Hand Labored in Wrought Iron
Finish - Faux Brown; delivery time varies - call for estimate

Specifications:

Height w/o chain: 10 1/2"	Weight: 3.9 lbs.
Overall Widths: 8 x 8"	Lamp: 60w Max
Canopy Size: 5"	Max J-Box: 4" dia
Chain length: 48" (3/16")	UL listed lamp parts



San Miguel Pendant Light - Med

MnPd202-Med Hand Labored in Wrought Iron
Finish - Faux Brown; delivery time varies - call for estimate

Specifications:

Height w/o chain: 13"	Weight: 5.3 lbs.
Overall Widths: 9 x 9"	Lamp: 75w Max
Canopy Size: 5"	Max J-Box: 4" dia
Chain length: 48" (1/4")	UL listed lamp parts



San Miguel Pendant Light - Lg

MnPd202-Lg Hand Labored in Wrought Iron
Finish - Faux Brown; delivery time varies - call for estimate

Specifications:

Height w/o chain: 17 1/4"	Weight: 6.9 lbs.
Overall Widths: 10 x 10"	Lamp: 75w Max
Canopy Size: 5"	Max J-Box: 4" dia
Chain length: 48" (5/16")	UL listed lamp parts



San Miguel Pendant Light -XLg

MnPd202-XLg Hand Labored in Wrought Iron
Finish - Faux Brown; delivery time varies - call for estimate

Specifications:

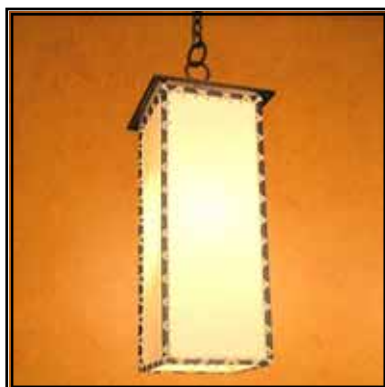
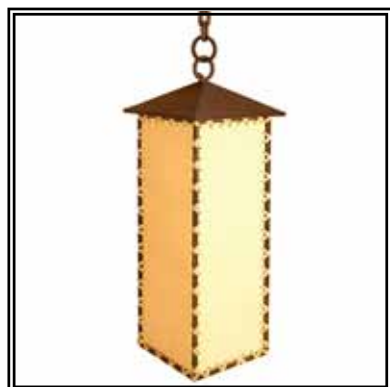
Height w/o chain: 22"	Weight: 7.9 lbs.
Overall Widths: 11.5 x 11.5"	Lamp: 100w Max
Canopy Size: 5"	Max J-Box: 4" dia
Chain length: 48" (5/16")	UL listed lamp parts

ANTIGUA RAWHIDE LIGHTING



Santa Cruz Pendant Light MnPd203

Antigua's **Santa Cruz Pendant Light** is a unique blend of Mission style with Wrought-iron and Rawhide that was inspired by the Arts & Crafts movement of early Americana. . Hand-made using traditional, old world craftsmanship from carefully selected, sun-dried hides, cut and cross-stitched to a hand-crafted mission style wrought-iron frame. A fusion of contemporary and rustic style, the Santa Cruz Pendant Light is a work of art that adds warmth to any room. Available in 4 sizes and 4 finishes and may be ordered with the length of chain desired.



Mission - Rawhide Pendant Lights



Santa Cruz Pendant Light - Sm

MnPd203-Sm Hand Labored in Wrought Iron
Finish - Faux Brown; delivery time varies - call for estimate

Specifications:

Height w/o chain: 14"	Weight: 3.6 lbs.
Overall Widths: 6 x 6"	Lamp: 60w Max
Canopy Size: 5"	Max J-Box: 4" dia
Chain length: 48" (3/16")	UL listed lamp parts



Santa Cruz Pendant Light - Med

MnPd203-Med Hand Labored in Wrought Iron
Finish - Faux Brown; delivery time varies - call for estimate

Specifications:

Height w/o chain: 20"	Weight: 5.2 lbs.
Overall Widths: 7.5 x 7.5"	Lamp: 60w Max
Canopy Size: 5"	Max J-Box: 4" dia
Chain length: 48" (1/4")	UL listed lamp parts



Santa Cruz Pendant Light - Lg

MnPd203-Lg Hand Labored in Wrought Iron
Finish - Faux Brown; delivery time varies - call for estimate

Specifications:

Height w/o chain: 25 1/4"	Weight: 7.1 lbs.
Overall Widths: 9 x 9"	Lamp: 75w Max
Canopy Size: 5"	Max J-Box: 4" dia
Chain length: 48" (5/16")	UL listed lamp parts



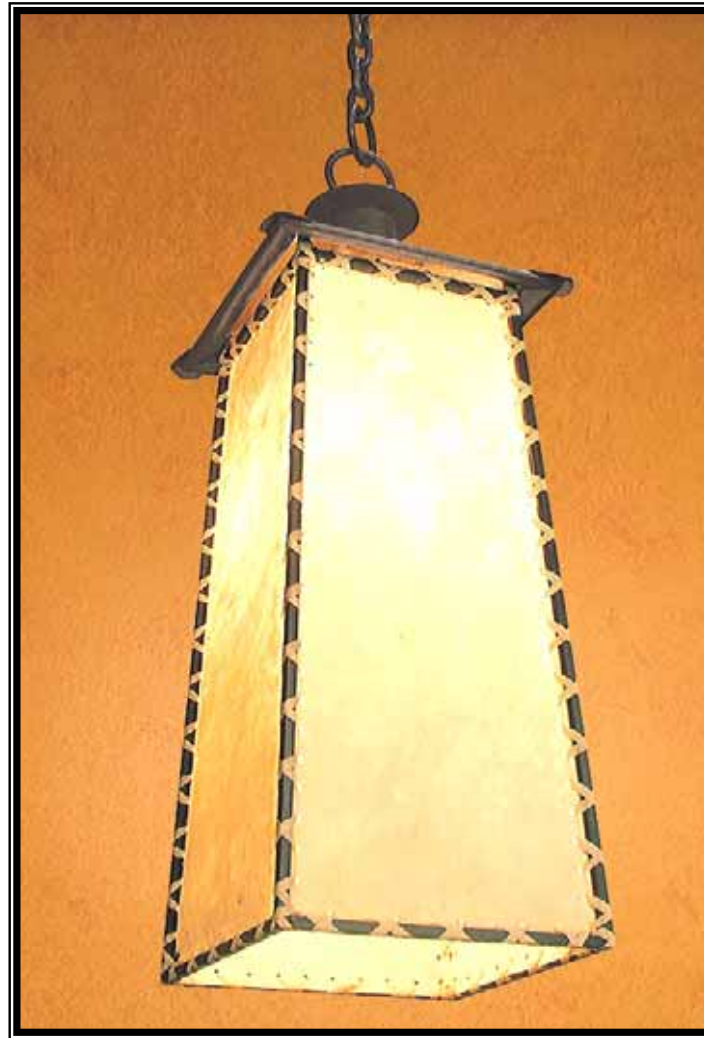
Santa Cruz Pendant Light -XLg

MnPd203-XLg Hand Labored in Wrought Iron
Finish - Faux Brown; delivery time varies - call for estimate

Specifications:

Height w/o chain: 30 "	Weight: 3.6 lbs.
Overall Widths: 11 x 11"	Lamp: 100w Max
Canopy Size: 5"	Max J-Box: 4" dia
Chain length: 48" (5/16")	UL listed lamp parts

ANTIGUA RAWHIDE LIGHTING



Capistrano Pendant Light MnPd204

Antigua's **Capistrano Pendant Light** is a unique blend of Mission style with Wrought-iron and Rawhide that was inspired by the Arts & Crafts movement of early Americana. Hand-made using traditional, old world craftsmanship from carefully selected, sun-dried hides, cut and cross-stitched to a hand-crafted mission style wrought-iron frame. A fusion of contemporary and rustic style, the Capistrano Pendant Light is a work of art that adds warmth to any room. Available in 4 sizes and 4 finishes and may be ordered with the length of chain desired.



Mission - Rawhide Pendant Lights



Capistrano Pendant Light - Sm

MnPd204-Sm Hand Labored in Wrought Iron
Finish - Faux Brown; delivery time varies - call for estimate

Specifications:

Height w/o chain: 15 1/2"	Weight: 3.9 lbs.
Overall Widths: 6.5 x 6.5"	Lamp: 60w Max
Canopy Size: 4"	Max J-Box: 4" dia
Chain length: 48" (3/16")	UL listed lamp parts



Capistrano Pendant Light - Med

MnPd204-Med Hand Labored in Wrought Iron
Finish - Faux Brown; delivery time varies - call for estimate

Specifications:

Height w/o chain: 21 3/4"	Weight: 6.5 lbs.
Overall Widths: 8 x 8"	Lamp: 60w Max
Canopy Size: 4"	Max J-Box: 4" dia
Chain length: 48" (1/4")	UL listed lamp parts



Capistrano Pendant Light - Lg.

MnPd204-Lg Hand Labored in Wrought Iron
Finish - Faux Brown; delivery time varies - call for estimate

Specifications:

Height w/o chain: 27 1/2"	Weight: 3.9 lbs.
Overall Widths: 10 x 10"	Lamp: 75w Max
Canopy Size: 5"	Max J-Box: 4" dia
Chain length: 48" (5/16")	UL listed lamp parts



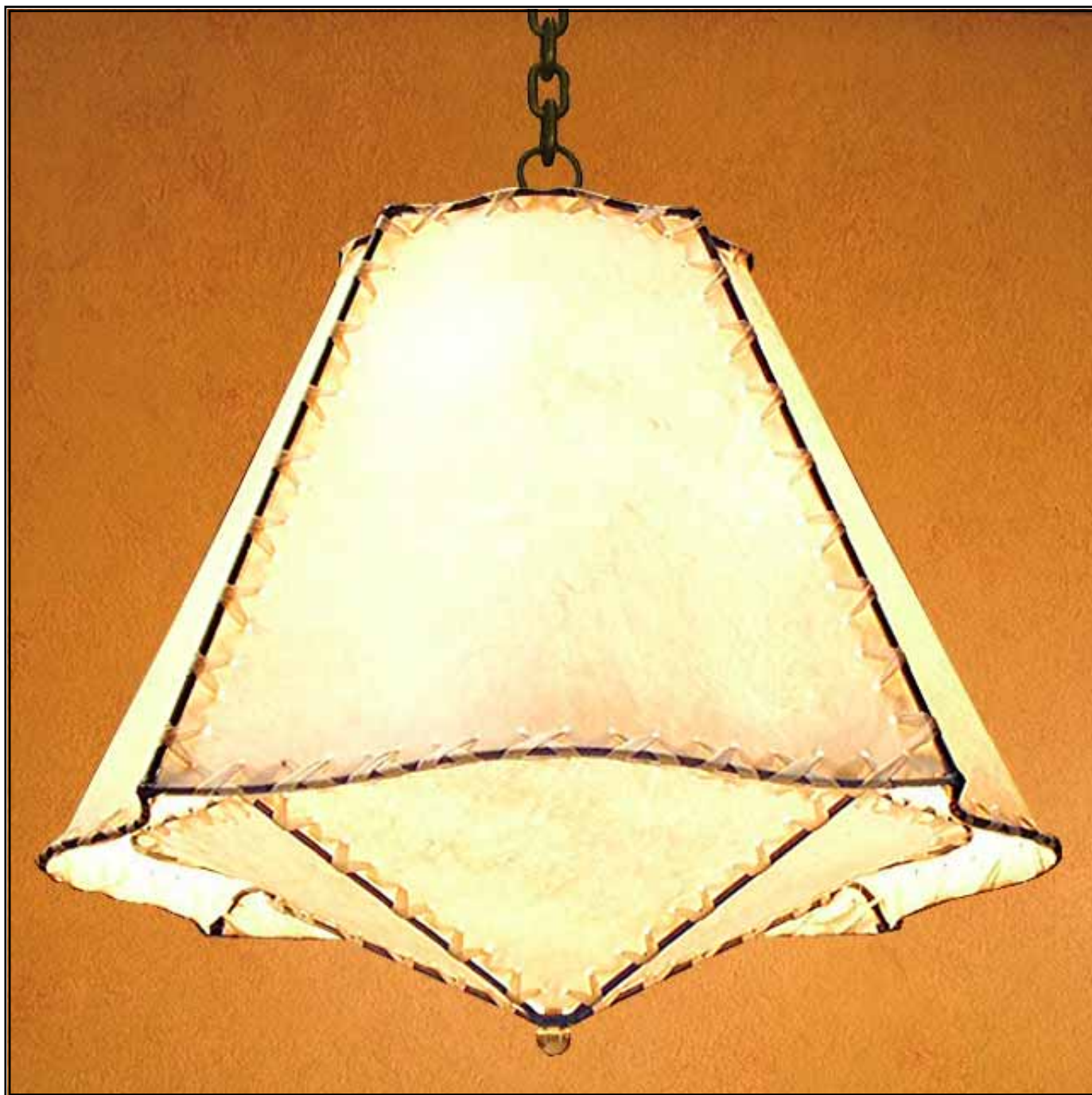
Capistrano Pendant Light -XLg

MnPd204-XLg Hand Labored in Wrought Iron
Finish - Faux Brown; delivery time varies - call for estimate

Specifications:

Height w/o chain: 34"	Weight: 10.3 lbs.
Overall Widths: 12 x 12"	Lamp: 100w Max
Canopy Size: 5"	Max J-Box: 4" dia
Chain length: 48" (5/16")	UL listed lamp parts

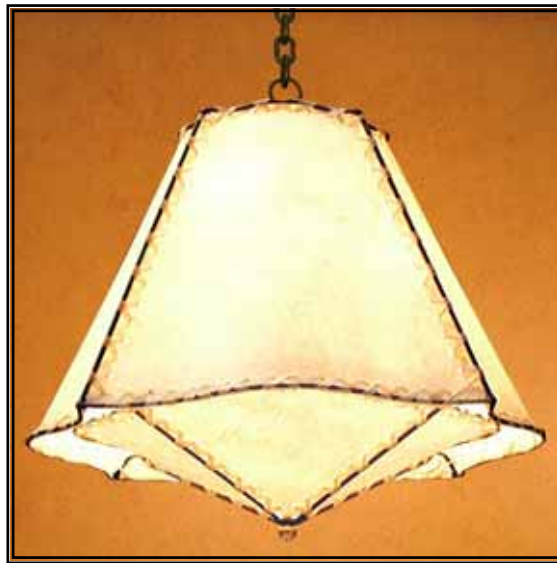
ANTIGUA RAWHIDE LIGHTING



Rawhide Pendant Lights

ANTIGUA - RAWHIDE PENDANTS

Antigua's Rawhide Pendants are hand-made using traditional, old world craftsmanship from carefully selected, sun-dried hides, skillfully treated to maintain consistent color and texture, and hand-sewn with the same natural leather. Custom made by ANTIGUA's blacksmiths and rawhide craftsmen, our artisans cut and cross-stitch each piece of rawhide to the sturdy wrought-iron frame to make each Rawhide Pendant a work of art. Rustic yet refined, the Rawhide Pendant collection is offered in 5 styles and 4 sizes and may be ordered with length of chain desired.



ANTIGUA RAWHIDE LIGHTING

ANTIGUA - RAWHIDE PENDANTS



Round Rawhide Pendant Light RwPdRnd

Our **Round Rawhide Pendant** is hand-made using traditional, old world craftsmanship from carefully selected, sun-dried hides, skillfully treated to maintain consistent color and texture, and hand-sewn with the same natural leather. Custom made by ANTIGUA's blacksmiths and rawhide craftsmen, our artisans cut and cross-stitch each piece of rawhide to the sturdy wrought-iron frame to make each Rawhide Pendant a work of art. Rustic yet refined, the Round Rawhide Pendant is offered in 4 sizes and may be ordered with length of chain desired.



Rawhide Pendant Lights



Round Rawhide Pendant Light – 20

RwPdRd-20 Hand-made in Wrought Iron & Rawhide
Single Socket; Delivery time varies - call for estimate

Specifications:

Height w/o chain: 20"
Bottom diameter: 18"
Top diameter: 8"
Canopy Size: 5"

Weight: 4.7 lbs.
Lamp: (1) 100w Max
Max J-Box: 4" dia
UL listed lamp parts



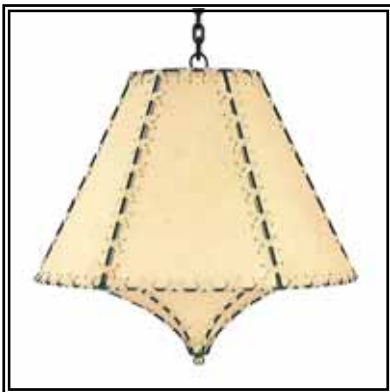
Round Rawhide Pendant Light - 21.5

RwPdRd-21 Hand-made in Wrought Iron & Rawhide
Dual Socket; Delivery time varies - call for estimate

Specifications:

Height w/o chain: 21 1/2"
Bottom diameter: 20 "
Top diameter: 9"
Canopy Size: 5"

Weight: 6.4 lbs.
Lamp: (2) 60w Max
Max J-Box: 4" dia
UL listed lamp parts



Round Rawhide Pendant Light - 23

RwPdRd-23 Hand-made in Wrought Iron & Rawhide
Dual Socket; Delivery time varies - call for estimate

Specifications:

Height w/o chain: 23"
Bottom diameter: 22"
Top diameter: 10"
Canopy Size: 5"

Weight: 8.4 lbs.
Lamp: (2) 75w Max
Max J-Box: 4" dia
UL listed lamp parts



Round Rawhide Pendant Light - 24.5

RwPdRd-24 Hand-made in Wrought Iron & Rawhide
Dual Socket; Delivery time varies - call for estimate

Specifications:

Height w/o chain: 24 1/2 "
Bottom diameter: 24"
Top diameter: 11"
Canopy Size: 5"

Weight: 9.5 lbs.
Lamp: (2) 100w Max
Max J-Box: 4" dia
UL listed lamp parts

48" of chain & canopy included, additional chain may be ordered for \$8.00 per ft. 3-4 week lead time

ANTIGUA RAWHIDE LIGHTING

ANTIGUA - RAWHIDE PENDANTS



Hexagon Rawhide Pendant Light RwPdHx

Our **Hexagon Rawhide Pendant** is hand-made using traditional, old world craftsmanship from carefully selected, sun-dried hides, skillfully treated to maintain consistent color and texture, and hand-sewn with the same natural leather. Custom made by ANTIGUA's blacksmiths and rawhide craftsmen, our artisans cut and cross-stitch each piece of rawhide to the sturdy wrought-iron frame to make each Rawhide Pendant a work of art. Rustic yet refined, the Hexagon Rawhide Pendant is offered in 4 sizes and may be ordered with length of chain desired.



Rawhide Pendant Lights



Hexagon Rawhide Pendant Light – 20

RwPdHx-20 Hand-made in Wrought Iron & Rawhide
Single Socket; Delivery time varies - call for estimate

Specifications:

Height w/o chain: 20"
Bottom diameter: 18"
Top diameter: 8"
Canopy Size: 5"

Weight: 4.2 lbs.
Lamp: (1) 100w Max
Max J-Box: 4" dia
UL listed lamp parts



Hexagon Rawhide Pendant Light - 21.5

RwPdHx-21 Hand-made in Wrought Iron & Rawhide
Dual Socket; Delivery time varies - call for estimate

Specifications:

Height w/o chain: 21 1/2"
Bottom diameter: 20"
Top diameter: 9"
Canopy Size: 5"

Weight: 5.9 lbs.
Lamp: (2) 60w Max
Max J-Box: 4" dia
UL listed lamp parts



Hexagon Rawhide Pendant Light - 23

RwPdHx-23 Hand-made in Wrought Iron & Rawhide
Dual Socket; 2-3 week lead time

Specifications:

Height w/o chain: 23"
Bottom diameter: 22"
Top diameter: 10"
Canopy Size: 5"

Weight: 7.7 lbs.
Lamp: (2) 75w Max
Max J-Box: 4" dia
UL listed lamp parts



Hexagon Rawhide Pendant Light - 24.5

RwPdHx-24 Hand-made in Wrought Iron & Rawhide
Dual Socket; Delivery time varies - call for estimate

Specifications:

Height w/o chain: 24 1/2"
Bottom diameter: 24"
Top diameter: 11"
Canopy Size: 5"

Weight: 8.6 lbs.
Lamp: (2) 100w Max
Max J-Box: 4" dia
UL listed lamp parts

48" of chain & canopy included, additional chain may be ordered for \$8.00 per ft. 3-4 week lead time

ANTIGUA RAWHIDE LIGHTING

ANTIGUA - RAWHIDE PENDANTS



Star Rawhide Pendant Light **RwPdSt**

Our **Star Rawhide Pendant** is hand-made using traditional, old world craftsmanship from carefully selected, sun-dried hides, skillfully treated to maintain consistent color and texture, and hand-sewn with the same natural leather. Custom made by ANTIGUA's blacksmiths and rawhide craftsmen, our artisans cut and cross-stitch each piece of rawhide to the sturdy wrought-iron frame to make each Rawhide Pendant a work of art. Rustic yet refined, the Star Rawhide Pendant is offered in 4 sizes and may be ordered with length of chain desired.



Rawhide Pendant Lights



Star Rawhide Pendant Light – 20

RwPdSt-20 Hand-made in Wrought Iron & Rawhide
Single Socket; Delivery time varies - call for estimate

Specifications:

Height w/o chain: 20"	Weight: 4.1 lbs.
Bottom diameter: 18"	Lamp: (1) 100w Max
Top diameter: 8"	Max J-Box: 4" dia
Canopy Size: 5"	UL listed lamp parts



Star Rawhide Pendant Light - 21.5

RwPdSt-21 Hand-made in Wrought Iron & Rawhide
Dual Socket; Delivery time varies - call for estimate

Specifications:

Height w/o chain: 21 1/2 "	Weight: 5.8 lbs.
Bottom diameter: 20"	Lamp: (2) 60w Max
Top diameter: 9"	Max J-Box: 4" dia
Canopy Size: 5"	UL listed lamp parts



Star Rawhide Pendant Light - 23

RwPdSt-23 Hand-made in Wrought Iron & Rawhide
Dual Socket; Delivery time varies - call for estimate

Specifications:

Height w/o chain: 23"	Weight: 7.5 lbs.
Bottom diameter: 22"	Lamp: (2) 75w Max
Top diameter: 10"	Max J-Box: 4" dia
Canopy Size: 5"	UL listed lamp parts



Star Rawhide Pendant Light - 24.5

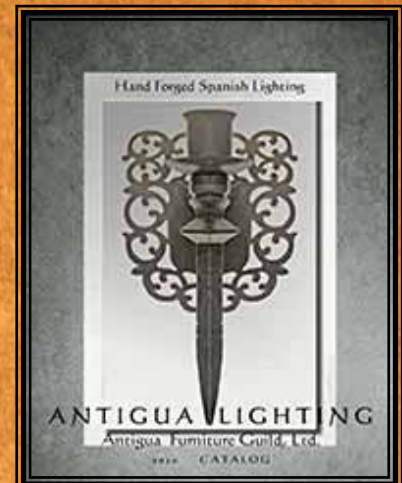
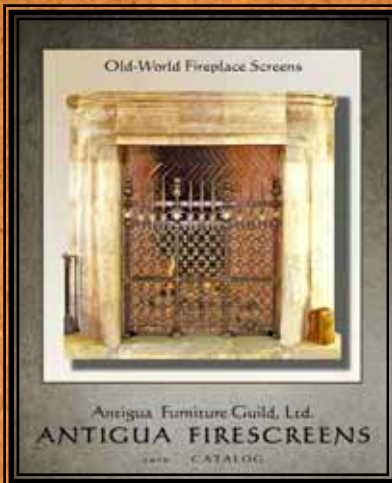
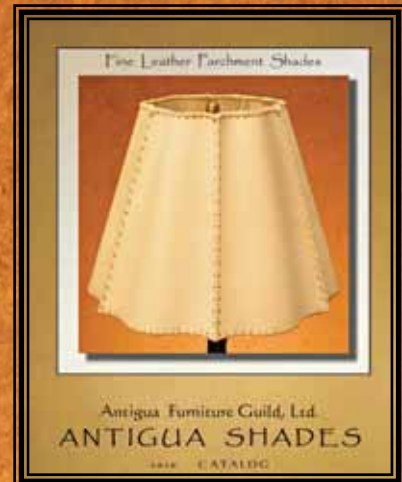
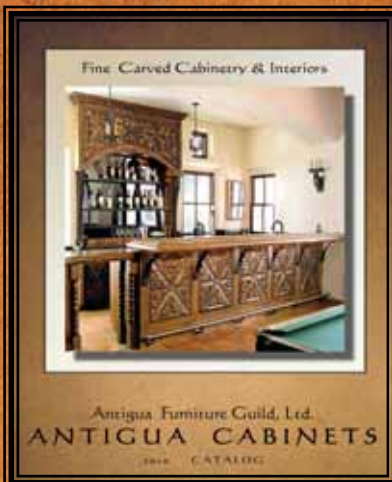
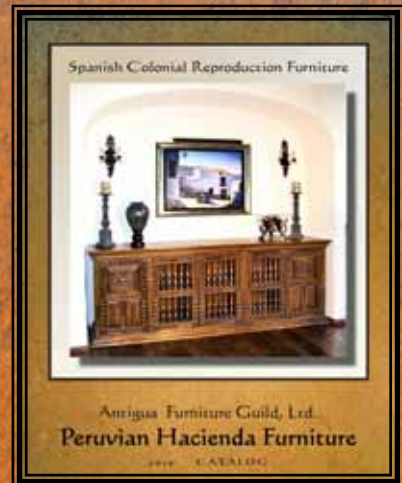
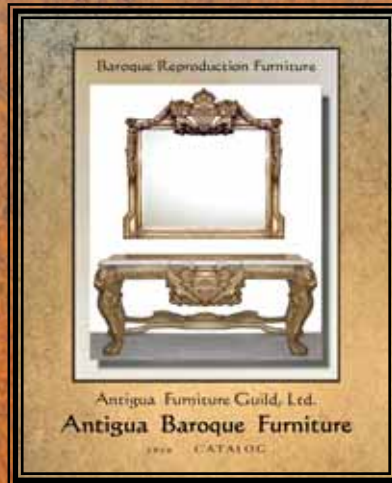
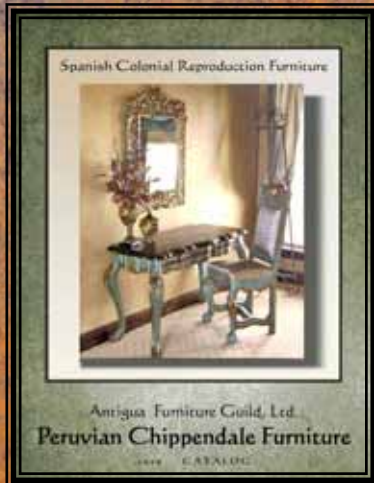
RwPdSt-24 Hand-made in Wrought Iron & Rawhide
Dual Socket; Delivery time varies - call for estimate

Specifications:

Height w/o chain: 24 1/2"	Weight: 8.4 lbs.
Bottom diameter: 24"	Lamp: (2) 100w Max
Top diameter: 11"	Max J-Box: 4" dia
Canopy Size: 5"	UL listed lamp parts

48" of chain & canopy included, additional chain may be ordered for \$8.00 per ft. 3-4 week lead time

Other Catalogs from Antigua



Antigua Furniture Guild, Ltd.
4952 Windsor Hill Suite 203
San Antonio, Texas 78239
Tel. 1-800-813-1408 Fax 1-866-275-7343
www.AntiguaDecor.com Sales@AntiguaDecor.com